

## **Cortright Family**

### [Overview](#)

### [Emily Cortright & Family](#)

#### [Census](#)

#### [Birth, Marriage & Death](#)

### [Butler Cortright](#)

#### [Census](#)

#### [Birth, Death, Marriage](#)

### **Allied Families**

Kannapel (see separate write-up)

Deremer (see separate write-up)

**NOTE:** Appendices contain supplemental information about the various peripheral family lines and locales – they add a little more color and detail to the main document.

### [Endnotes](#)

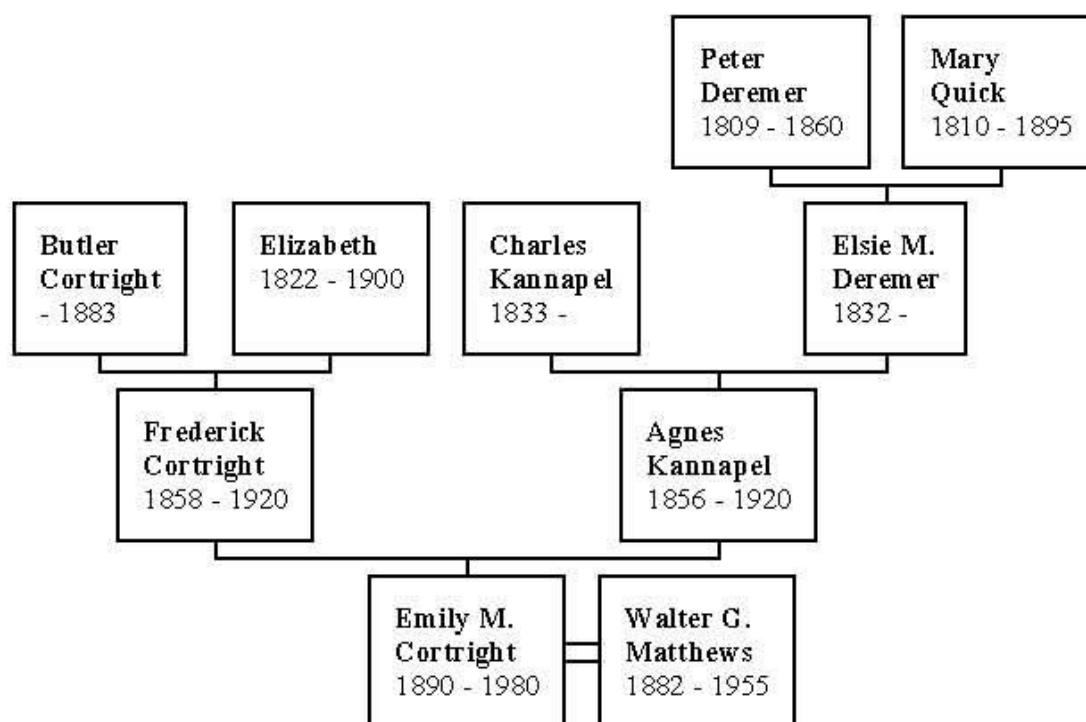
## CORTRIGHT Family

This family is interesting in that they were not new emigrants to the US (except for Charles Kannapel), unlike all the other families researched. Also, it's kind of fun to research a place called "Mauch Chunk!" Before you start looking too hard for "Mauch Chunk" on a map, you need to know that it is now called "Jim Thorpe!"

It has also been challenging in that we have not been able to find many birth, marriage or death records. This has limited us to census, directory and other resources. So, we can create a less than complete picture of this family!

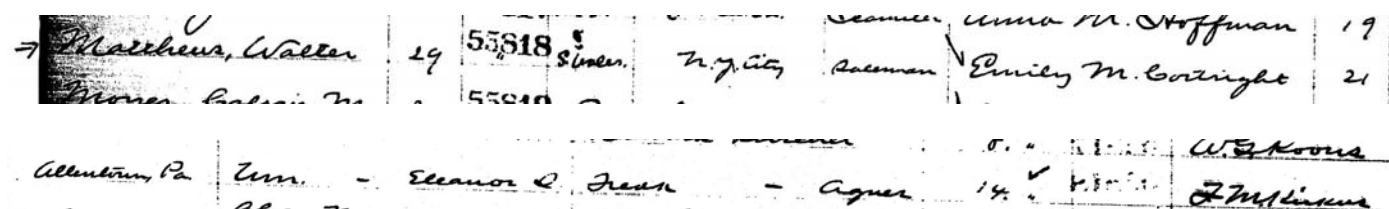
And, remember that the 1890 census is unavailable ... so that leaves an effective 20 year gap between some of the records found – a lot can happen in 20 years! This graphic illustrates the basic layout of the family. Since new information is being found all the time, do not rely on the dates in this graphic ... dates given within the body of the research are more up-to-date!

### *Ancestors of Emily M. Cortright*



## EMILY CORTRIGHT & Parents

Emily join's the family tree through her marriage to Walter G. Matthews. See write-up on MATTHEWS for details and more, though an image of the marriage certificate<sup>1</sup> is below.



We will start our discussion with Emily Cortright's parents... Frederick Cortright and Agnes Kannapel! Note that Frederick was not born with the name Frederick ... you'll see the evolution of his name through the census. We don't know why he became Frederick. The situation is compounded in that the census is notoriously inaccurate ... for instance in 1920 he is listed as Albert ... well we know he was Frederick at that time, though born as Alman!

## Census & Directories

### 1930 Census<sup>ii</sup>

Allentown, Lehigh, Pennsylvania

Cortright, Roy, head, O, 8000, 45, wid, Pennsylvania, Machinist, Motor Car Works

" ", Elsie, Sister, 49, S, Pennsylvania

" ", Marion, Daughter, 15, S, Pennsylvania,

### 1930 Census<sup>iii</sup>

117 South Paw (sp?) Street

Allentown, Lehigh, Pennsylvania

Cortright, George B, Head, R \$28, 46, Pennsylvania, Ribbon Mill

" ", Pauline A, Wife, 36, Pennsylvania

" ", Dorothy M, Daughter, 9, Pennsylvania

" ", Lorraine R, Daughter, 6, Pennsylvania

" " Marion J, Daughter, 4, Pennsylvania

### 1929/1903 Allentown Pennsylvania Directory<sup>iv</sup>

Cortright Elsie M. h 1623 E Greenleaf	
Cortright Frederick R, janitor, res 953 Hamilton	
Cortright George B, ribbon finisher, res 117 S Law. Pauline A	
Cortright Harriet (wid Edwin), h 340 N 12th	
Cortright LeRoy V, machine operator, res 1623 E Greenleaf	
Cortright Margaret A (wid Samuel), rms 462 Walnut	
Cortright Marion R, student, h 1623 E Greenleaf	

Obviously, Elsie is the daughter ... she appears to be living with her brother and his daughter and brother George and wife Pauline also still live in town.

## Cortright Family – Mauch Chunk to Allentown Pennsylvania

### 1920 Census<sup>v</sup>

Allentown, Lehigh, Pennsylvania

235 Madison Street

Cortright, Albert T, Head, R, 62, M, Pennsylvania, Carpenter, Contractor

Cortright, Agnes M, Wife, 65, M, Pennsylvania

Cortright, Elsie M, daughter, F, 38, Pennsylvania, Shoe Factory

Note that Frederick (who had been born an Alman) became an Albert in this census! We do find the sons also listed in the census.

### 1920 Census<sup>vi</sup>

450 Maple

Cortright George, head, 37, Pennsylvania

“ “ Pauline, wife, 27, Pennsylvania

### 1920 Census

1036 Green Street

Cortright, Leroy V, Head, 28, Pennsylvania, Laborer, Machine Shop

“ “ Margarite A, Wife, 26, Pennsylvania

“ “ Marion R, Daughter, 5, Pennsylvania

### 1910 Census<sup>vii</sup>

11-WD Allentown, Lehigh, Pennsylvania

328 Sixteenth Street

Cortwright, Frederick I, Head, 52, Pennsylvania, Carpenter, House

“ “ Agnes M, Wife, 53, Pennsylvania

“ “ Elsie M, Daughter, 29, Pennsylvania

“ “ George B., Son, 27, Pennsylvania, Painter, House

“ “ Emily M, Daughter, 20, Pennsylvania, Taper, Knitting Mill

“ “ Le Roy, B. Son, 18, Pennsylvania, Helper, Shoe Factory

### 1900 Census<sup>viii</sup>

East Mauch Chunk, Carbon, Pennsylvania

Allman Cortright, Abt 1858, Head, Pennsylvania, Carpenter

Agnes Cortright, Abt 1857, Wife, Pennsylvania

Elsie Cortright, Abt 1881, Daughter, Pennsylvania

Emily Cortright, Abt 1890, Daughter, Pennsylvania

George Cortright, Abt 1883, Son, Pennsylvania

Leroy Cortright, Abt 1892, Son, Pennsylvania

This census page was so light that this information was obtained from a prepared index and not from the actual census page itself. This is a shame as the actual census page seems to give month and year of birth ... versus the approximations given above!

1890 Census – no records exist and we have not found any directories covering this area for this time in history.

## Cortright Family – Mauch Chunk to Allentown Pennsylvania

### 1880 Census<sup>ix</sup>

East Mauch Chunk, Carbon, Pennsylvania

Lehigh Street (same as his parents)

Cartright, Elman, W, M, 23, Carpenter, Penn

Cartright, Agnes, W, F, 24, Wife, Keeping House, Penn

Cartright, Mary, W, F, 2, Daughter, Penn

See the next section on Butler Cortright and family for the older censuses.

### **Birth, Marriage & Death**

*We have not yet obtained any birth, marriage or death certificates for this family.*

### **BUTLER CORTRIGHT & Family**

The parents of Frederick (nee Alman) Cortright were Butler Cortright and Elizabeth Cortright.

### **Census & related**

We have not found the family in the 1840 census. We have searched on Cortright, Courtright, Cortwright, etc ... and have found many families, just none with a Butler as "head of household" ... all that is available for the 1840 census. Though, Butler may not have been married in 1840 given the age of the children listed and so could have been living with another family member.

### 1850 Census<sup>x</sup>

Tobyhanna, Monroe, PA

Butler Cortright, 38, M, Laborer, Pennsylvania

Elizabeth Cortright, 29, F, Pennsylvania

Henry Cortright, 7, M, Pennsylvania

Mary Cortright, 6, F, Pennsylvania

Ann Mariah Cortright, 2, F, Pennsylvania

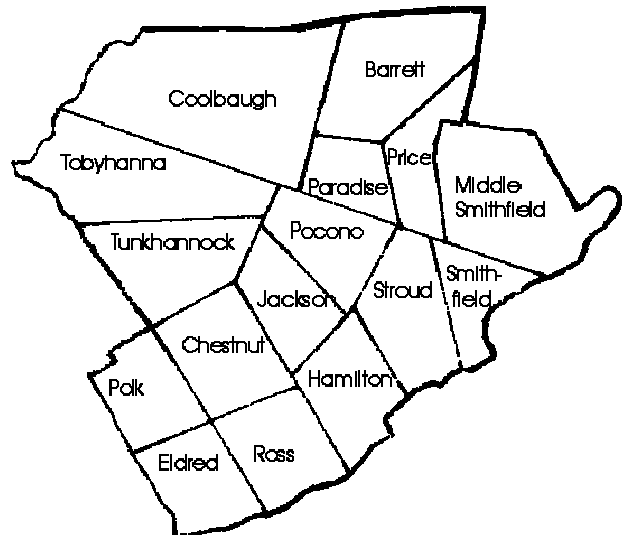
Ira Cortright, 2/12, M, Pennsylvania

(Maps<sup>xi</sup> on the next page shows the location of Tobyhanna in Monroe County)

# Cortright Family – Mauch Chunk to Allentown Pennsylvania



(Approaching Tobyhanna<sup>xii</sup>)



1860 Census<sup>xiii</sup>

Penn Forest, Carbon, Pennsylvania

Butler Coatrice, 45, M, Farmer, 800 (value of real estate), 230 (value of personal estate), PA

Elizabeth “”, 37, F, PA

Henry “”, 18, M, PA

Mary “”, 16, F, PA

Ann “”, 12, F, PA

Irey “”, 10, M, PA

Jacob “”, 7, M, PA

John B “”, 4, M, PA

Elman “”, 2, M, PA



## Cortright Family – Mauch Chunk to Allentown Pennsylvania

We also learn that Butler was a “School Director” for the township<sup>xiv</sup> in the following years ... which is consistent with the census listing for 1860.

1859.—Butler Cortwright, Cornelius Ziegenfuss.

1862.—A. Christman, B. Cortwright.

1865.—Adam Christman, Butler Cortwright.

### **116 DRAFT OF 1863 FOR THREE YEARS.**

#### **NESQUEHONING TOWNSHIP.**

Cadden, Patrick	Kindder, John	Smitham, Richard
Cawllen, Thomas	McCabe, Hugh	Stevens, Isaac
Duffy, Patrick	McDonnell, Tho.	Wolbert, Jacob
Hendrick, Edg. L.	McDonald, G. W.	Watkins, Wm.
Hackett, William	McLeslie, Samuel	

#### **PACKER TOWNSHIP.**

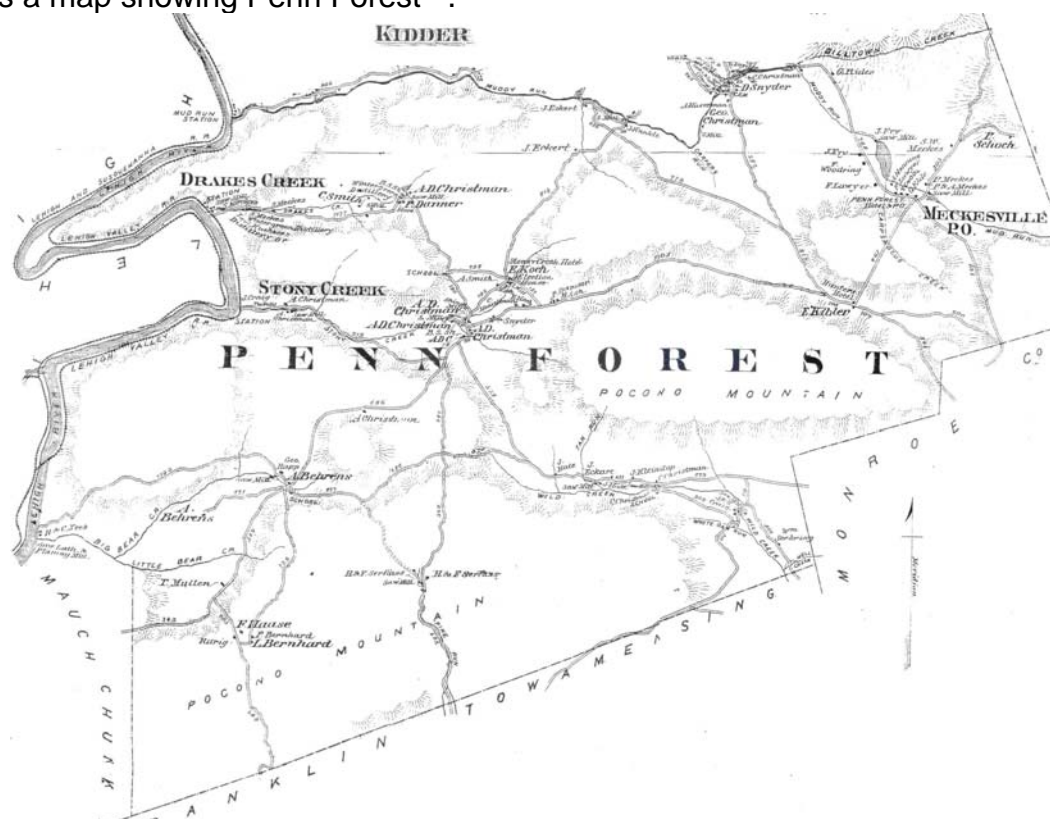
Arner, Moses	Hartz, David	Wetzell, Samuel
Foust, John jr.	Krap, Casper	Wetzell, David
Gerhart, Levi	Neifert, Martin	Wetzell, Aaron

#### **PENN FOREST TOWNSHIP.**

Becker, Bevy	Knes, Owen	Serfass, Jacob
Brown, Fred.	Keiper, Nathan	Serfas Wilson
Campbell, Wm.	Lanyer, Francis	Snyder, William
Cortright, Henry	Linebacher, Henry	Sherry Henry
Clingesine, John	Merwes, Herman	Shorter, Patrick
Donnelly, Peter	Mackes, S. W.	Smith, Franklin

Also the 1863 Draft of Penn Forest<sup>xv</sup> lists a Henry Cortright, which would be consistent with Henry being 18 in 1860 ...

Below is a map showing Penn Forest<sup>xvi</sup>.



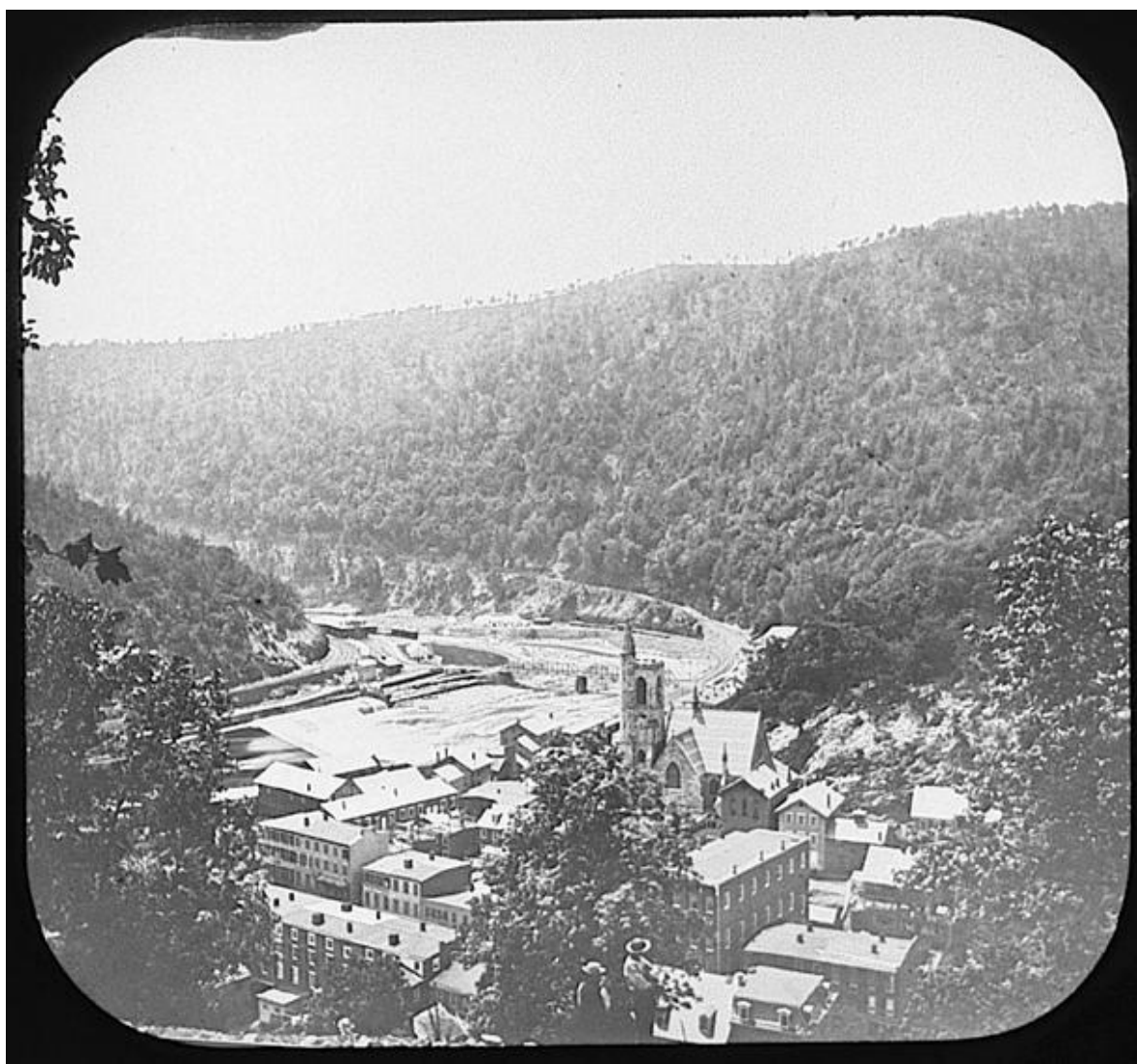
## Cortright Family – Mauch Chunk to Allentown Pennsylvania

Another researcher<sup>xvii</sup> has found the following which seems possible ... Butler's son Henry would have been about 23 at the time ...

*"Bethlehem Moravian Congregation Marriages 1854-1892 has  
May 14, 1865 Henry Cortright from Mauch Chunk married Anna Russell (Roessel)  
from Bethlehem. They were married by Brother de Schweinitz. This must link to the  
Mauch Chunk Cortright's."*

NOTE: though, Cortright was a not uncommon name in the Bethlehem area and so it's possible that the name is just similar to another Henry Cortright though coming from Mauch Chunk gives a little more weight to the theory of Butler's son -- assuming that the family had left Penn Forest by this time. Though, you have the Mauch Chunk families associated with Ira and N.D. Cortright to also consider ... Also, how would this work with the 1863 enlistment (supposedly for 3 years) of a Henry Cortright from Penn Forest?!?!? Always questions ....

View of Mauch Chunk, 1876<sup>xviii</sup>.





## Cortright Family – Mauch Chunk to Allentown Pennsylvania

### 1870 Census<sup>xix</sup>

Mauch Chunk, Carbon, Pennsylvania

Cortright, Butler, 55, M, W, Laborer, 1000 (value of real estate), 1200 (value of personal estate), Penn

Cortright, Elizabeth, 48, F, W, Keeping House, Penn

Cortright, Elman, 13, M, W, Penn

Lover, Lewis, 23, M, W, Blacksmith, 100 (value of personal estate), Prussia

Lover, Annie, 22, F, W, Keeping House, Penn

Lover, Ellen, 3, F, W, Penn

We suspect that the Lover family is daughter Annie's family.

Interestingly, we seem to find brothers Ira, Jacob and John living in New York ... we suspect that they are living with sister Mary and her family in Eastchester New York! Now how they got there is anyone's guess ... it looks like her husband is from Ireland. We do subsequently confirm that these are the children of Butler and Elizabeth.

### 1870 Census<sup>xx</sup>

EastChester, New York

Byron, John, 40, M, W, Road Contractor, Ireland

“ “ Mary, 26, F, W, Keeping House, Pennsylvania

“ “ Michael, 76, M, W, Ireland

“ “ Margaret, 65, F, W, Ireland

Quince, Margaret, 15, F, W, Pennsylvania

Kelly Mary, 9, F, W, New York

Kelly, Annie, 5, F, W, New York

Cortwright Ira, 20, M, W, Works on Road, Pennsylvania

“ “ Jacob, 18, M, W, Works on Road, Pennsylvania

“ “ John, 12, M, W, Pennsylvania

Brother Henry is the one person we have not found in 1870.

### 1875 Beers' Atlas of Carbon Co., Pa<sup>xxi</sup> Index of residents of East Mauch Chunk

Cortright, B.	92	Lehigh St.	NW	7th to 8th	Buildings on alley
Cortright, B.	94	Lehigh St.	NW	7th to 8th	Unimproved lot
Cortright, B.	96	Lehigh St.	NW	7th to 8th	Unimproved lot

Here's a photo showing East Mauch Chunk<sup>xxii</sup> and a street map<sup>xxiii</sup> showing the properties that Butler had and this is followed by the full map for East Mauch Chunk.



East Mauch Chunk

# EAST MAUCH CHUNK

MAUCH CHUNK TWP  
Scale 200 Feet to the inch.

L. C. & N. Co.

ST.									
65	67	69	71	73	75	77	79	ST.	
R. Rufe							E. Weaver	81	83
								F. Schilling	85
								A. Weaver	87
								W. Weaver	89
								Heiser	91
									93
								M. Boyle	95
								97	99
								101	103
								105	107
								109	
ST.									
65	67	69	71	73	75	77	79	81	83
J. Horn	J. Horn	J. Shive	J. Shive	Geo. Elakoff	A. Raesler	John Ermer		D. Becket	85
								M. Peschel	87
								J. Morning	89
								Geo. Heisel	91
								Herscher	93
								B. Cortright	95
								BC	97
								99	101
								103	105
								107	109
ST.									
85	87	89	91	93	95	97	99	81	83
R. Rufe	M.S.	M. Stehle	M. Stehle	J. Hunt	H. Grove	L. Rice	L. Rice	S. Moore	85
								A. Lehman	87
								C. E. Stedman	89
								F. Moon	91
								Rice	93
									95
								97	99
								101	103
								105	107
								109	

# Cortright Family – Mauch Chunk to Allentown Pennsylvania



1880 Census<sup>xxiv</sup>

East Mauch Chunk, Carbon, Pennsylvania

Lehigh Street

Cortright, Butler, W, M, 68, Laborer, Penn

“ “, Elizabeth, W, F, 57, Keeping House, Penn

“ “, Ellen Cortright, W, F, 13, Granddaur, Penn

This is probably Ellen Lover who lived with her parents and grandparents in 1870 ... It actually looks like the name might have been (or become) Lauer ... see this entry for Evergreen Cemetery<sup>xxv</sup> ... also, Annie died apparently before the 1880 census ... Lewis is married to Ellen Appelbach by 1880<sup>xxvi</sup>

LAUER	LEWIS	1850	1913	31	L	MUMMEY, ELLEN	Sp/o 1) Annie (Cortright), 2) Ellen Lauer
-------	-------	------	------	----	---	---------------	---

If we look at the records for Mauch Chunk Cemetery<sup>xxvii</sup> we find:

LAUER ANN	1872/02/20	024-00-00	???
-----------	------------	-----------	-----

This is probably Ann Cortright Lauer!

Once we learned that mom Elizabeth was alive in 1900 and we searched for her in the census ... it ends up that she was living with daughter Mary, next to son Jacob in New

## Cortright Family – Mauch Chunk to Allentown Pennsylvania

York and then we went backwards to do a little more tracking on the siblings of Alman/Frederick ....

1900 Census<sup>xxviii</sup>

428 ??? Street, Mount Vernon, Westchester, NY

Byron, Mary, Head, Jan 1845, 55, Wd, Penna

Cortright, Byron, Nephew, Mch 1879, 21, S, NY, Bookkeeper

“ “, Mannie, Niece, Mch 1879, 21, S, Penna

“ “ Elizabeth, Mother, Aug (blank), 76, Wd, Penna

426 ??? Street, Mount Vernon, Westchester, NY

Cortwright, Jacob, Head, Dec 1854, 45, Penna, Contractor

“ “, Margaret, Wife, Nov 1858, 41, Penna

“ “, John B, son, Aug 1880, 19, NY, School

“ “, Barrie, son, Mch 1879, 21, NY, ???

[the 1910 census<sup>xxix</sup> still has Mary and Jacob living next door to one another and the Nephew Byron is still with Mary – it's a not very legible copy]

[We know that John's wife would have been widowed in 1902 and sometime before 1920<sup>xxx</sup> she marries a Charles Young and still has most of her children still living with her and is still living in Westchester County! In 1920<sup>xxxi</sup> we find that Jacob is deceased and they his widow Margaret is living with son John. We didn't look too hard for everyone in the 1910 & 1920 census, though, it would appear that several of the siblings died in Mount Vernon!]

1900 Census<sup>xxxii</sup>

330 South 7<sup>th</sup> Avenue, Mount Vernon, Westchester, NY

Cortright, John, head, June 1859, 42, Pennsylvania, Contractor

“ “ Margaret, wife, Oct 1864, 35, Pennsylvania

“ “ John B, son, Mar 1884, 16, Pennsylvania, Peddler - Milk

“ “ Frederick, son, June 1886, 13, Pennsylvania, at school

“ “ Rallen A, son, July 1888, 11, Pennsylvania, at school

“ “ William S, son, Apr 1892, 8, New Jersey, at school

“ “ Esther M, daughter, Sept 1894, 5, New Jersey, at school

“ “ Albert, son, Apr 1897, 3, New York

Grenner, Hannah, MIL, Jan 1842, 57, Wales

(Am not sure if this is the correct John Cortright though the name is somewhat unusual and in 1870 he did come and work and live with his brothers and sister in Eastchester of which Mount Vernon was a part of)

Haven't looked for Ira and wonder if the Niece and Nephew are his children?

There is an 1890 Census substitute<sup>xxxiii</sup> and this does show parts of the family in Mount Vernon. Interestingly, there appear to be a couple of listings for some family members ... I suspect that Mary's husband died during this timeframe and that explains some of what we see. We also find a John Cortright listed ... is this the other brother? Probably the index



## Cortright Family – Mauch Chunk to Allentown Pennsylvania

was also created from directories for more than one year between 1889-1891 and apparently the families moved during this period.

Jacob Cortright	Contractor	8 <sup>th</sup> av n 3d
Jacob Cortright	Supt, Roads	258 S. 7 <sup>th</sup> av
John Cortright	Lab	472 S. 7 <sup>th</sup> av
John H. Byron	Contractor	150 S. 8 <sup>th</sup> av
John H. Byron	Contractor	8 <sup>th</sup> av nr 3d
Mrs J.H. Byron	Wid	150 S. 8 <sup>th</sup> av

1880 Census<sup>xxxiv</sup>

East Chester, Westchester, NY

303 ??? Avenue

Byron, John H, 62, Contractor, Ireland

“ “, Mary, 36, wife, Penn

Cortright, Jacob, 28, Carpenter, Penn

“ “ Margarite, 24, wife, Keeping house, Penn

“ “ Michael B, 1, son, New York

Note that throughout the period covered by the censuses that we researched, we found Jacob and Mary living next to one another!

### Birth, Marriage & Death

We may never confirm when Butler or Elizabeth were born, who their parents were or when and where they even married and we do know when they died and where they are buried.

They are both buried in Mauch Cemetery<sup>xxxv</sup> along with a few other family members.

Cortright, Butler

1883/04/23

Age 67

Lot #804, Section #3

Owner: Mrs. Butler Cortright

Cortright, Child

1869/04/10

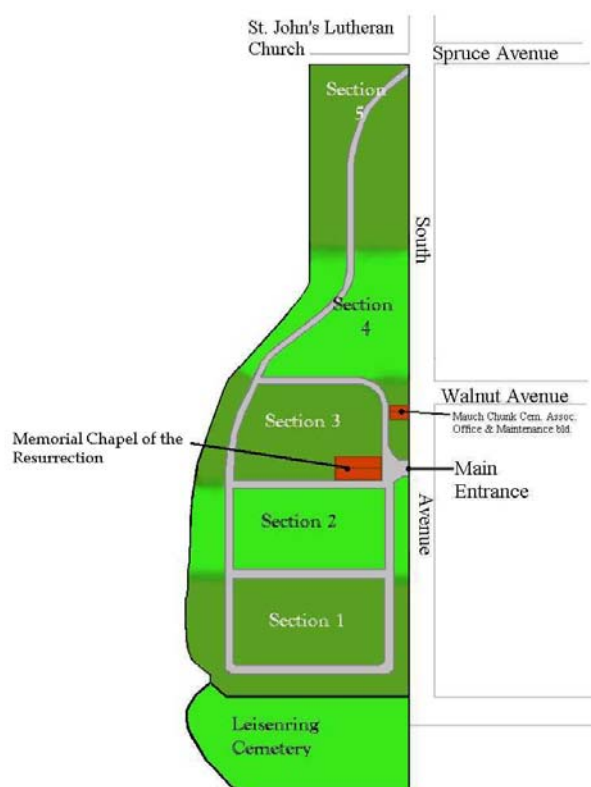
Age 10

Lot #804, Section #3

Owner: Mrs. Butler Cortright

Cortright, Elizabeth

1900/08/26



## Cortright Family – Mauch Chunk to Allentown Pennsylvania

Age 78

Lot #804, Section #3

Owner: Mrs. Butler Cortright

(This would be Elizabeth! – meaning that she was alive in 1900 and so we then looked for her in the 1900 census ... she was found living with daughter Mary and next to son Jacob (see census info above) ... so, they must have transported her body from New York to Mauch Chunk for burial)

Cortright, John B

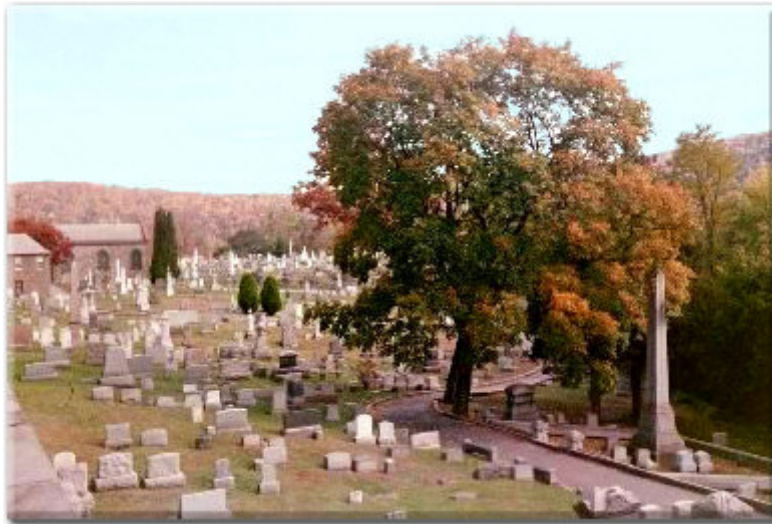
1902/09/06

Age 47

Lot #804, Section 3

Owner: Mrs. Butler Cortright

(One figures that this is the son John born c. 1855)



(View of Cemetery ... same source as transcribed data)



## Obituaries ...

With the help of the Dimmick Memorial Library<sup>xxxvi</sup> in Jim Thorpe (previously Mauch Chunk), we were able to obtain death/obituary notices for Butler and Elizabeth.

**Mr. Butler Cortright, an old and respected citizen of the county, who formerly resided at East Mauch Chunk, and died several days ago near White Haven, was buried here this afternoon.**

So,

1. we learn that Butler was a well known gardener for Thomas Foster
2. we learn that their house has been known as the "old Kannapel House" on Lehigh Street
3. that the families found in Mt. Vernon were the children of Butler and Elizabeth
4. the survivors are listed as: Henry, Herman, Jacob, Ira and Illman and Mrs. J.H. Byron (nee Mary Cortright) – Annie Cortright Lauer predeceased her parents) -- is the Herman mentioned really John ... he's the only missing son (he dies 2 years later) – and, we do find that Henry is in Westchester as are his siblings in 1900.

### **Died at Mt. Vernon.**

Mrs. Elizabeth Cortright, widow of the late Butler Cortright, of Mt. Vernon, N. Y., died Sunday afternoon after an illness of three days.

Mrs Cortright was 77 years old. She formerly lived in East Mauch Chunk, in what is known as the old Kannapel house, on Lehigh street. Her husband was the well known gardener for Thos. Foster. He is dead about 17 years. About ten years ago Mrs. Cortright went to Mt. Vernon, where she made her home with her daughter, Mrs. J. H. Byron. She is survived by five sons and one daughter, Henry, Herman and Jacob, of Mt. Vernon, N. Y., Ira, of Stroudsburg and Illman, of East Mauch Chunk, and Mrs. J. H. Byron, of Mt. Vernon. The arrangements for the funeral are not known. The remains will be buried in the family plot in Upper Mauch Chunk.

This is a photo of White Haven<sup>xxxvii</sup> ... purportedly, Butler died near here ...



## Cortright Family – Mauch Chunk to Allentown Pennsylvania

+++++

We did come across a possible marriage<sup>xxxviii</sup> ... which took place in Northampton County (it's important to realize that Carbon County was not formed until 1843 ... so, anything prior to that date would state Northampton County).

Elizabeth Siglin (3 August 1826, Northampton Co, PA –  
26 August 1900, NY, NY)  
Married  
18 May 1840  
Butler Courtright

Carbon County formed in 1843 from parts of Monroe and Northampton Counties

Monroe County, Pennsylvania was formed from Pike & Northampton counties on April 1, 1836. The county was named in honor of James Monroe, fifth President of the United States.

It's a bit suspicious that she would be 14 at the time of the marriage ... Northampton County is pretty vague for a location and a marriage c. 1840 is not unreasonable since we find the family in 1850 and their first child was born by 1843. "Our" Elizabeth would have been born closer to 1822 which would have made her about 18 in 1840! The death date matches exactly what we found. Unfortunately, the person who originally posted this information, no longer has this information posted nor anything else!

## Cortright Family – Mauch Chunk to Allentown Pennsylvania

### END NOTES

- <sup>i</sup> Delaware Public Archives, Hall of Records, 121 Duke of York St., Dover, DE 19901, Marriage Records, RG 1500, Matthews to Cortwright, 1911 #55818
- <sup>ii</sup> [www.ancestry.com](http://www.ancestry.com), 1930 US Census, Roll 2064, ED 41, Image 440.0
- <sup>iii</sup> [www.ancestry.com](http://www.ancestry.com), 1930 US Census, Roll 2062, ED 5, Image 999.0
- <sup>iv</sup> <http://www.distantcousin.com/Directories/PA/Allentown/1929/Page.as?page=169> & <http://www.distantcousin.com/Directories/PA/Allentown/1929/Page.asp?page=170>
- <sup>v</sup> [www.ancestry.com](http://www.ancestry.com), 1920 US Census, Roll T625\_1588, Page 3B, ED 185, Image 0884
- <sup>vi</sup> [www.ancestry.com](http://www.ancestry.com), 1920 US Census, Roll T625\_1588, Page 14A, ED 157, Image 0155
- <sup>vii</sup> [www.ancestry.com](http://www.ancestry.com), 1910 US Census, Series T624, Roll 1364, Part 1, Page 228A
- <sup>viii</sup> [www.ancestry.com](http://www.ancestry.com), 1900 US Census, Roll T623 1391, Page 17B, ED 20
- <sup>ix</sup> [www.ancestry.com](http://www.ancestry.com), 1880 US Census, Roll T9\_1108; FHL Film #1255108, Page 530B, ED 125, Image 0715
- <sup>x</sup> [www.ancestry.com](http://www.ancestry.com), 1850 US Census, Page 152, Roll: M432\_798
- <sup>xi</sup> <http://www.livgenmi.com/1895/PA/County/monroe.htm> & <http://rootsweb.com/~pamonroe/outline.htm>
- <sup>xii</sup> <http://freepages.genealogy.rootsweb.com/~nepaphotos/november/November1/Approaching%20Tobyhanna%20PA.jpg>
- <sup>xiii</sup> [www.ancestry.com](http://www.ancestry.com), 1860 US Census, Roll M653\_1089, Page 826
- <sup>xiv</sup> <http://freepages.genealogy.rootsweb.com/~carbdat/m&h/pnfrst.htm> The History of the Counties of Lehigh & Carbon, Commonwealth of Pennsylvania, By Alfred Mathews & Austin N. Hungerford, Published in Philadelphia, Pa., in 1884, Transcribed from the original in April 2003, By Stephen E. Fritz, CHAPTER XXI., Penn Forest, Township, Pages 754 to 757
- <sup>xv</sup> [http://www.libraries.psu.edu/do/dbwholepdfs/27735757\\_whole.pdf](http://www.libraries.psu.edu/do/dbwholepdfs/27735757_whole.pdf), Patriotism of Carbon County PA by J.D. Laciard, Mauch Chunk, PA 1867, page 116
- <sup>xvi</sup> <http://freepages.genealogy.rootsweb.com/~carbdat/beers/pfor.jpg>
- <sup>xvii</sup> e-mail received 3/29/2005, meta [lcadugan@erols.com]
- <sup>xviii</sup> [http://www.geh.org/ar/strip60/htmlsrc/m198702500001\\_ful.html](http://www.geh.org/ar/strip60/htmlsrc/m198702500001_ful.html), George Eastman House, Still Photograph Archiv, Full Catalog Record, **87:0250:0001** -- TITLE ON OBJECT: Mauch Chunk Penn Birdseye view, **PUBLISHER: Centennial Photographic Co.**
- <sup>xix</sup> [www.ancestry.com](http://www.ancestry.com), 1870 US Census, Roll: M593\_1320, Page 275, Image: 551
- <sup>xx</sup> [www.ancestry.com](http://www.ancestry.com), 1870 US Census, Roll M593\_1114, Page 224, Image 447
- <sup>xxi</sup> <http://freepages.genealogy.rootsweb.com/~carbdat/beers/emc/ac.htm>
- <sup>xxii</sup> <http://freepages.genealogy.rootsweb.com/~nepaphotos/november/November1/East%20Mauch%20Chunk%20Aerial%20View.jpg>
- <sup>xxiii</sup> <http://freepages.genealogy.rootsweb.com/~carbdat/beers/emc/emc.jpg>
- <sup>xxiv</sup> [www.ancestry.com](http://www.ancestry.com), 1880 US Census, Roll: T9\_1108; FHL Film #1255108, Page 531C, ED 125, Image 0716
- <sup>xxv</sup> <http://freepages.genealogy.rootsweb.com/~mccem/evgcem/1.htm>
- <sup>xxvi</sup> [www.ancestry.com](http://www.ancestry.com), 1880 US Census, Roll: T9\_1108; Family History Film: 1255108; Page: 525C; Enumeration District: 125; Image: 0704.
- <sup>xxvii</sup> <http://freepages.genealogy.rootsweb.com/~mccem/1.html>
- <sup>xxviii</sup> [www.ancestry.com](http://www.ancestry.com), 1900 US Census, Mount Vernon Ward 1, Westchester, New York, Roll T623 1175, Page 20A, Ed 81
- <sup>xxix</sup> [www.ancestry.com](http://www.ancestry.com), 1910 US Census, 1-WD Mt Vernon, Westchester, New York
- <sup>xxx</sup> [www.ancestry.com](http://www.ancestry.com), 1920 US Census, Year: 1920; Census Place: Mount Vernon Ward 1, Westchester, New York; Roll: T625\_1277; Page: 14A; Enumeration District: 76; Image: 29.
- <sup>xxxi</sup> [www.ancestry.com](http://www.ancestry.com), 1920 US Census, Year: 1920; Census Place: Mount Vernon Ward 1, Westchester, New York; Roll: T625\_1277; Page: 1A; Enumeration District: 81; Image: 185.
- <sup>xxxii</sup> [www.ancestry.com](http://www.ancestry.com), 1900 US Census, Mount Vernon Ward 1, Westchester, Roll T623 1175, Page 16A, ED 80
- <sup>xxxiii</sup> [www.ancestry.com](http://www.ancestry.com), Mt. Vernon, New York Directories, 1889-91, the city of Mt. Vernon forms part of Westchester County. This database is a transcription of city directories originally published in 1889 and 1890.
- <sup>xxxiv</sup> [www.ancestry.com](http://www.ancestry.com), 1880 Census, East Chester, Westchester, New York, Roll T9\_945; FHL # 1254945, Page 201A, ED 94, Image 0403
- <sup>xxxv</sup> <http://freepages.genealogy.rootsweb.com/~mccem/c.html>
- <sup>xxxvi</sup> Susan Sterling, librarian, Dimmick Memorial Library, 54 Broadway, Jim Thorpe, PA 18229, received 17 August 2005 – Butler's entry: Mauch Chunk Daily Times, April 26, 1883 & Elizabeth's entry: Mauch Chunk Coal Gazette, August 28, 1900

## Cortright Family – Mauch Chunk to Allentown Pennsylvania

---

xxxvii

<http://freepages.genealogy.rootsweb.com/~nepaphotos/images/Birds%20Eye%20View%20of%20White%20Haven%20PA.jpg>

xxxviii

<http://www.geocities.com/sneezykat2003/SIGLIN.html> (August 2005, no longer available online)