

## Hawkins Family

After finishing the original research, we did learn a little bit more about the son, George Hawkins ... the individual who died while traveling to Soultz-sous-Forets and had been an innkeeper in Swansea before his death. We have learned some more information germane to the life of George.

### George Hawkins (Jnr)

The two missing bits of information pursued were:

- more information on the Rhiwderin, the ship he sailed on, and
- more information about the “South Wales Hotel”

### Rhiwderin<sup>i</sup>

RHIWDERIN - 1883-88

Code letters: JCMG

Official Number: 87491

Master: Captain J.C. Tyacke

Rigging: steel single screw steamer; 1 deck; web frames; 4 cemented bulkheads; double bottom, aft 67 feet, forward 84 feet, 240 tons; Aft Peak Tank 9 tons

Tonnage: 1,156 tons gross, 908 under deck and 737 net

Dimensions: 226.9 feet long, 31.2 foot beam and holds 115.8 feet deep; Raised Quarter Deck 86 feet; Bridge Deck 52 feet; Forecastle 28 feet

Construction: 1883, Pennar Ship and Engine Co. in Milford Haven

Propulsion: compound engine with 2 inverted cylinders of 28 & 52 inches diameter respectively stroke 33 inches; 99 horsepower; engine by Kincaid & Co. in Greenock

Owners: J. Cory & Sons

Port of registry: Cardiff

### South Wales Hotel, 62 High Street, Swansea



Because of bombing during WWII, It is doubtful that this building now is what it was like in the late 1800s or it may not even exist! You'll see below that our conclusion is that where 62 High Street was is now a vacant lot! It is located near the Swansea train station and some very helpful people agreed to take photos of where it would have been<sup>ii</sup>!

First, let's confirm its location – “I looked at an 1887 Directory for Swansea<sup>iii</sup> and it is listed at the intersection of High Street and Alexandra Road ... so, on High Street between Alexandra Road and Mariner Street” Another take on it's location “The station is

ADDENDUM: George Hawkins -> Swansea

*situated on the east side of High Street, just opposite the junction with Alexandra Road. The hotel was on the west side of High Street, approximately midway between the junction with Alexandra Road and Mariner Street. There are buildings there now; from memory there is a fast food restaurant and a newsagent, although they might well date from after the 1870s. The buildings are a bit dilapidated."*<sup>v</sup>

- 51 Jenkins D. Queen's Hotel  
*Here is Alexandra-road.*
- 63 Parry Hugh, South Wales Hotel
- 64 Davies Dd. Station Inn
- 65 Thomas W. draper
- 66 Arthur's S. & Son, grocers  
*Here is Mariner-street*
- 67 Russell G. Great Western  
Coffee tavern

- 62 South Wales P.H. (J. Roberts propr.)
- 63-64 Station Inn (E. Davies propr.)
- 65 Freedman K., confectioner,
- 66 Boots Cash Chemist

We then looked at a 1909 Directory<sup>v</sup> (left) which was closer in time to the photo below and listed, starting at Alexandria street and going past the RR station we have the hotel, another Inn, a confectioner and then the Boots Chemist ... clearly visible in the photo!

So, we know that the railway was on one side of High Street and the South Wales Hotel was

purportedly almost across the street ... with that information, this picture (older) might be showing the rail station on the right and possibly a portion of the hotel on the left! Though, more than likely the last premises shown is 63-64 High Street and not 62!



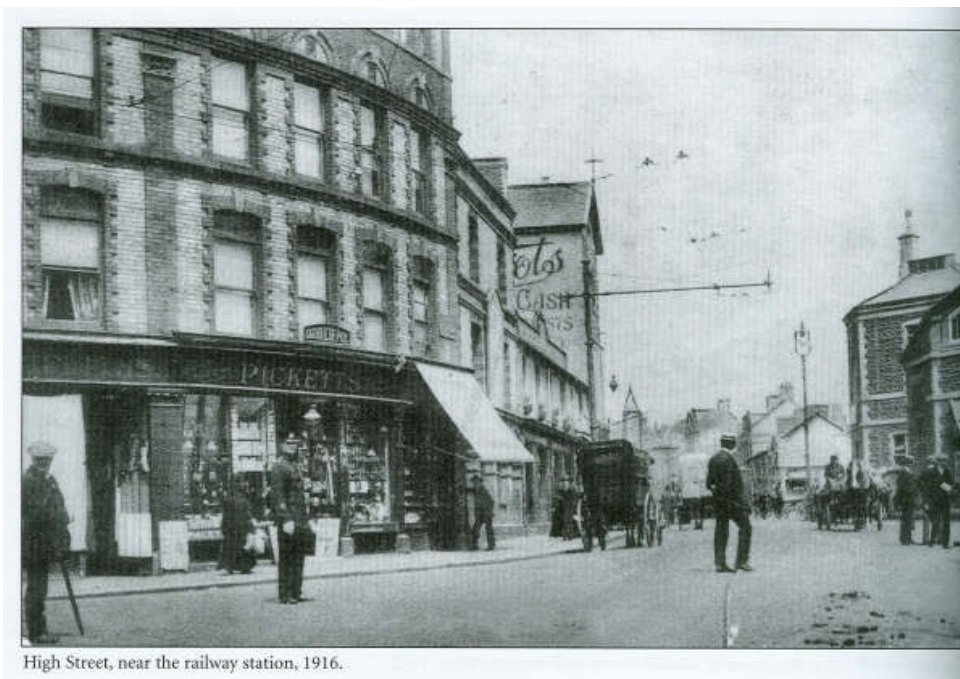
This is a modern photo that shows these same buildings ... match up the Boots Chemist shop with its distinctive architecture in both photos!

ADDENDUM: George Hawkins -> Swansea



Using our information from the 1909 Directory above and the photo, it would appear that 62 High Street is actually the vacant lot! The tall building was the Boots Chemist, 66 High Street, then you had 65 High Street and then 63-64 High Street and then 62 High Street was on the corner!

With this information, we can look at the photo below and figure that the South Wales hotel is probably the building just past where you see the "Picketts" Sign ... probably marking the end of what was called the Alexandria Building (with several tenants) .... Use the Boots Chemist shop (again) to orient yourself! We think it is the 3 story building just past the awning.



High Street, near the railway station, 1916.

ADDENDUM: George Hawkins -> Swansea

**NOTES**

- 
- <sup>i</sup> E-mail received 8/19/2005, Gilbert Provost, Genealogy, Ships and Wines, <http://www.reach.net/~sc001198>
- <sup>ii</sup> e-mails received over a period, July – August 2005, photographer – Celia @ [gorseinon@hotmail.com](mailto:gorseinon@hotmail.com), deliverer - Sylvia
- <sup>iii</sup> [www.historicaldirectories.org](http://www.historicaldirectories.org), Swansea & District Directory, 1887, page 43
- <sup>iv</sup> E-mail received 7/22/2005, Andrew Dulley, [archives@swansea.gov.uk](mailto:archives@swansea.gov.uk)
- <sup>v</sup> [www.historicaldirectories.org](http://www.historicaldirectories.org), Swansea Directory, 1908-09, page 55